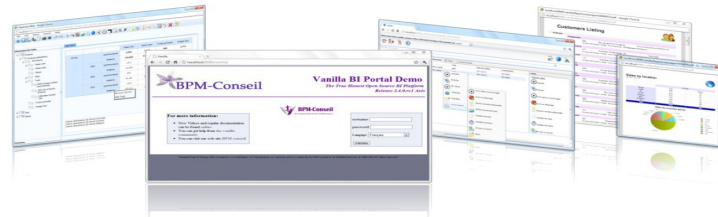


Patrick Beaucamp

Founder of the Vanilla Project

Mail : Patrick.beaucamp@bpm-conseil.com



Dashboard, Flash Maps & Kpi visualisation in the cloud using Vanilla Open Source Bi Platform

MYGOSSCON 2011



Presentation Agenda

Technologies & Cost

Dashboard, Flash Maps & Kpi

Cloud Administration

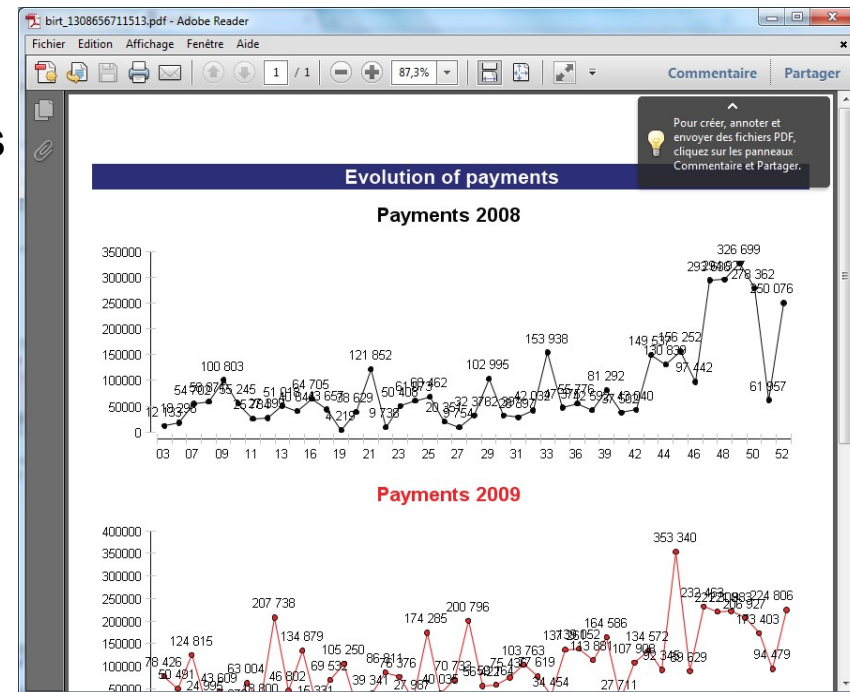
Vanilla Platform

« Cloud » Technologies

- Use of « cloud ready » database infrastructure, such as Amazon Ec2 & Amazon Aws to deploy « Cloud Infrastructure »
- Use of Vanilla Amazon AMI or any Vanilla VirtualBox « ready to run » server
- Worldwide access to the Platform in a second (data entry), using Cloud Farms of Servers
 - Vanilla BiGateway connector to Amazon Cloud database
 - Web Browser, Smartphone or Tablet to access the visualisation
- Use of Open Source Platform to deliver access to data : Vanilla Open Source Bi. Interest of Open Source Business model is « support price per server » (not per user)
- Reduce Cost of the global solution & Reduce the time to deploy

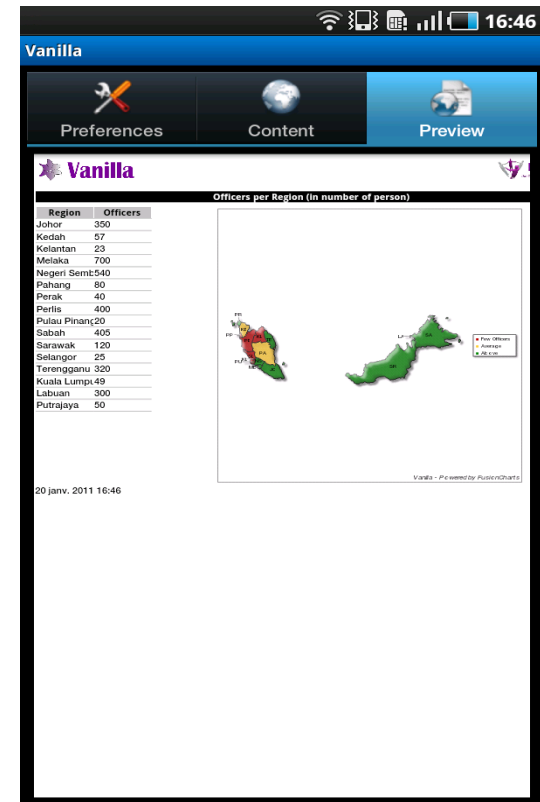
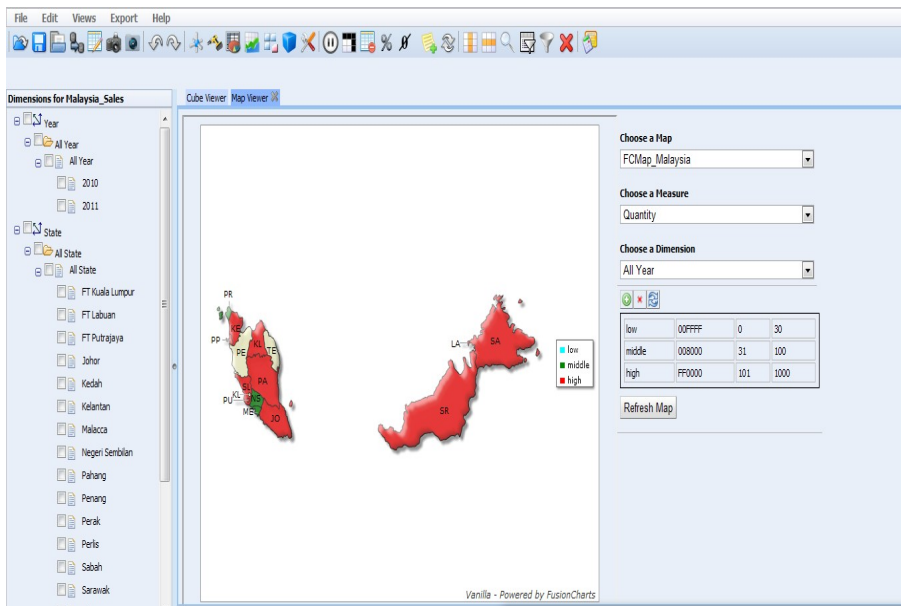
Technical Architecture

- Data load in the cloud : security & ease of manipulation. Cloud Database are matured, different commercial options on the market.
- Processing in the cloud : dynamic resource allocation & Hypervision of resources and connection. Sometimes, confusion with "hosted only » platforms, major differences are :
 - dynamic allocation of additional ressources
 - pay as you use it (standard fee for basic services, and additional cost for dynamic ressources such as disk space, additional server or additional cpu)



Combination of Software

- Open Source : Vanilla (Bi Platform) & Vanilla BiGateWay to load & extract data from cloud database
- Free Piece of Software & Free Flash document (FusionMaps)
- Free Services : GoogleMap (if no Flash Maps)



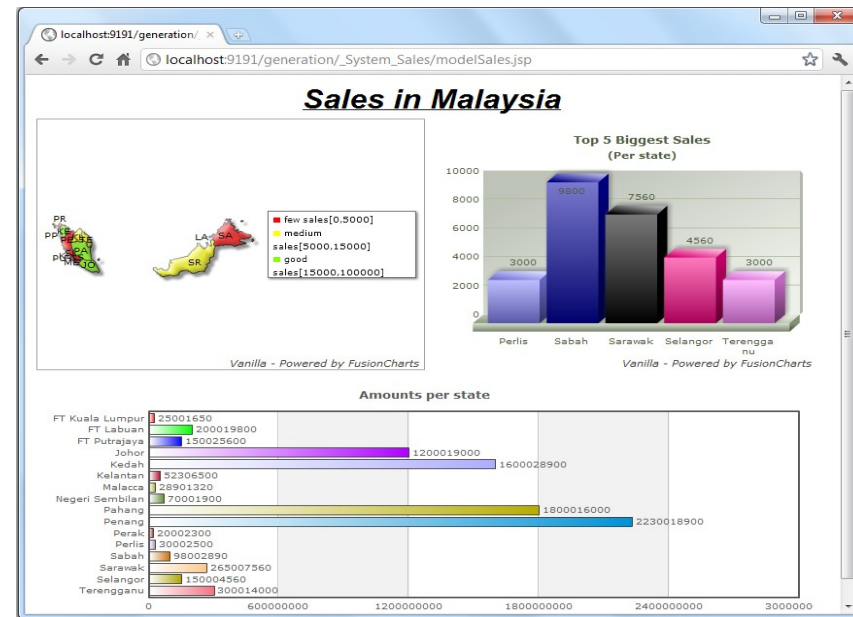
How it works

- Data are loaded into database using Vanilla BiGateWay (Etl), Kpi-aware Etl (ie : functions to load Kpi)
- DataDisplay through Vanilla Bi Platform

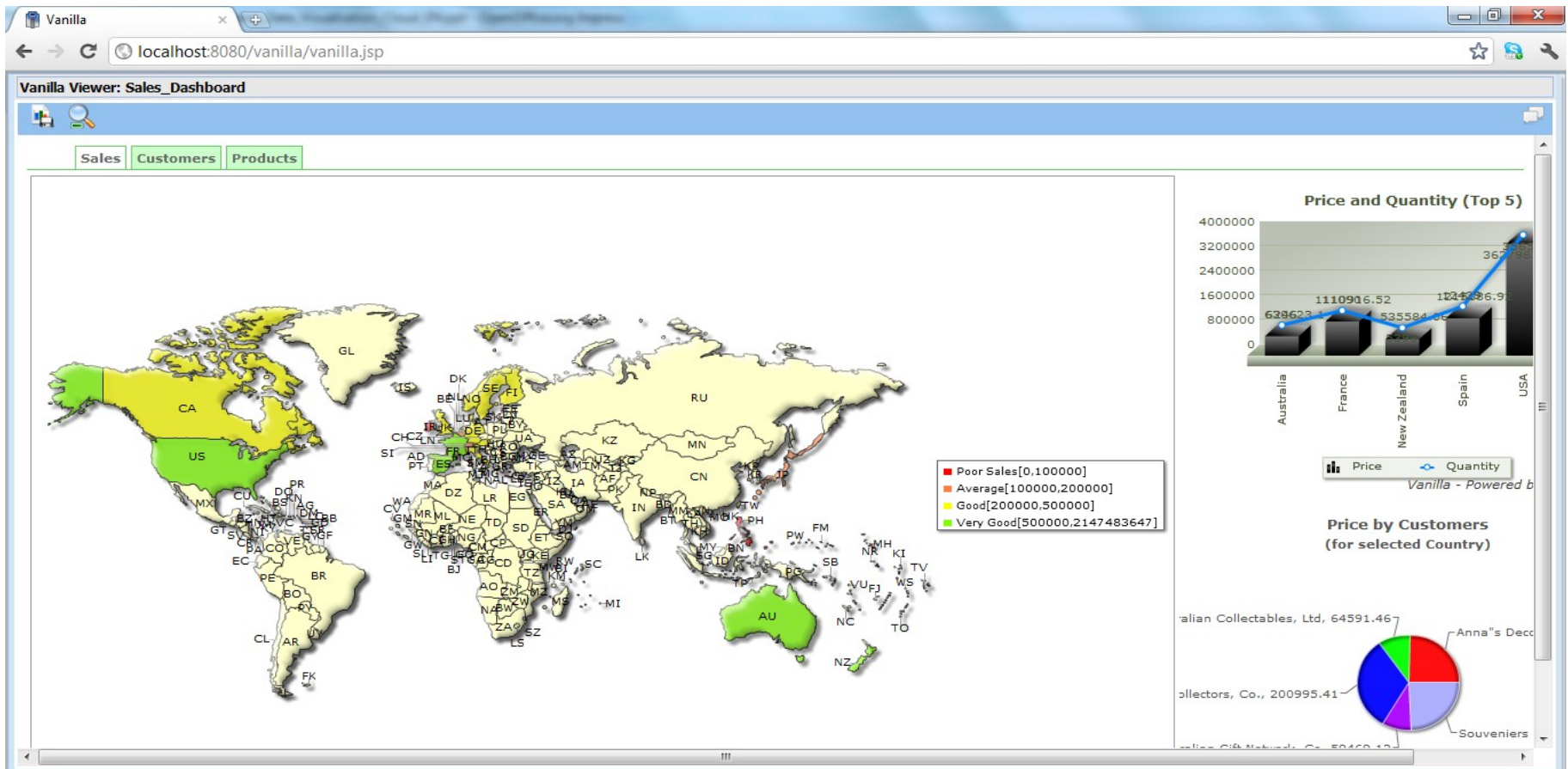
FmUserWeb - Google Chrome
localhost:8080/FmUserWeb/?bpm.vanilla.sessionId=97e2bc38-1f0d-3e19-9eb2-eb3c39d53e1b&bpm.vanilla.groupId=1&bpm.vanilla.repositoryId=1

Products - 01/01/2010

Tendance	Santé	Compteur	Date	Actuel	Minimum	Maximum	Objectif	Achévé	Tolérance	Période
↓	↑	Production	01/01/2010	1450	0	2000	1200	120%	0	MONTH
↓	↑	Orders	01/01/2010	56500	0	100000	50000	113%	0	MONTH
↑	↓	Disposals	01/01/2010	43	0	500	50	86%	0	MONTH



Data Visualisation (1/2)

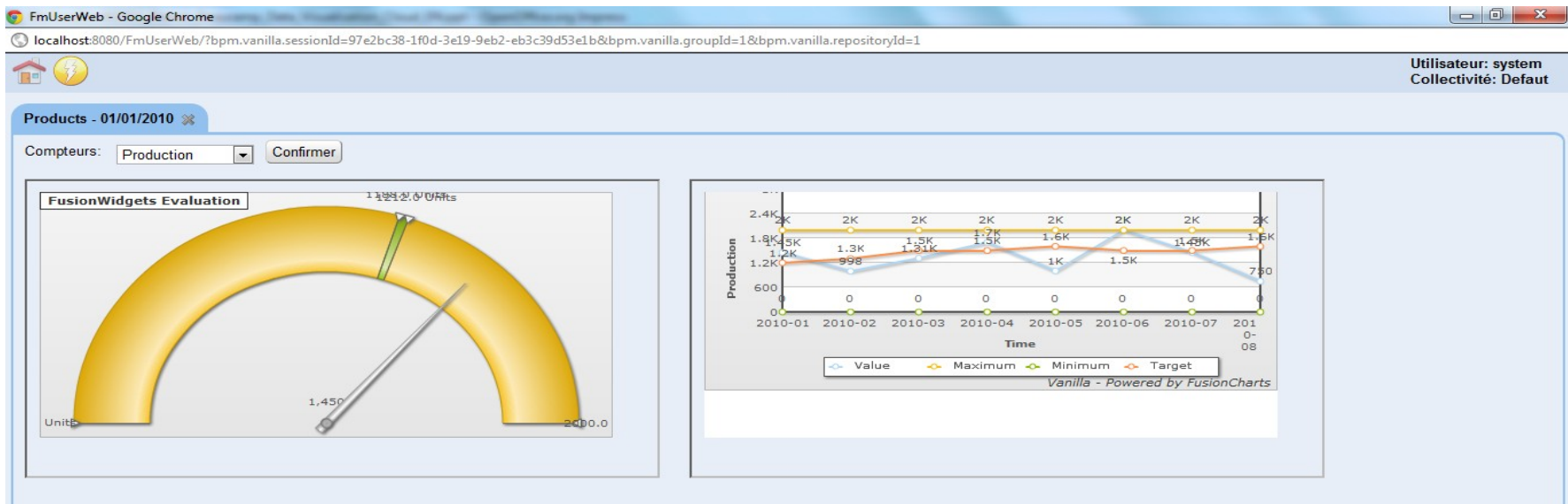


Data Visualisation (2/2)

FmUserWeb - Google Chrome
localhost:8080/FmUserWeb/?bpm.vanilla.sessionId=97e2bc38-1f0d-3e19-9eb2-eb3c39d53e1b&bpm.vanilla.groupId=1&bpm.vanilla.repositoryId=1

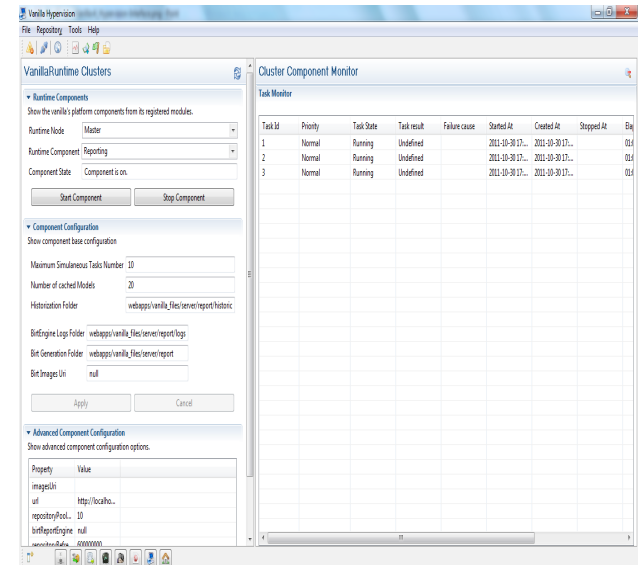
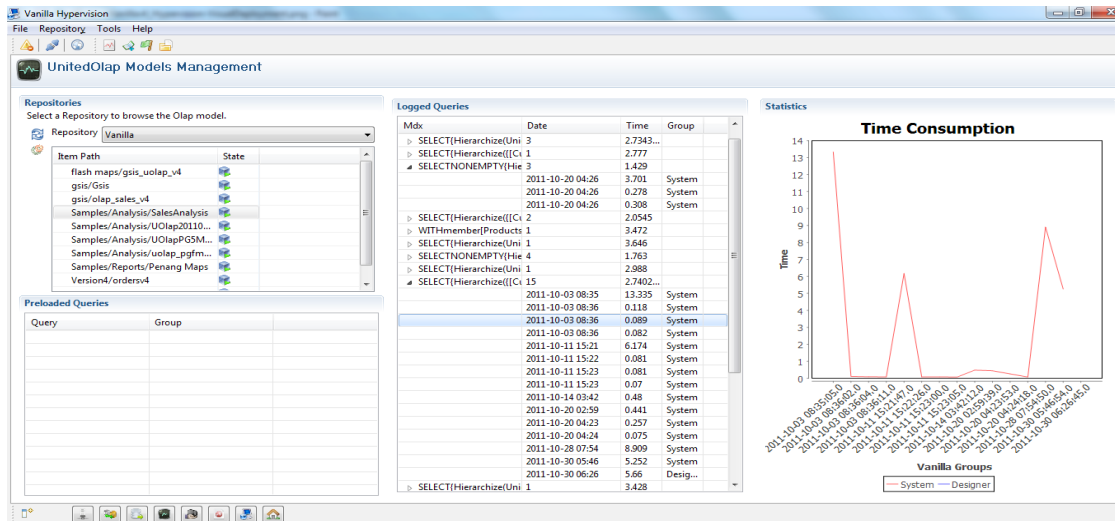
Products - 01/01/2010

Tendance	Santé	Compteur	Date	Actuel	Minimum	Maximum	Objectif	Achevé	Tolérance	Période
↓	↑	Production	01/01/2010	1450	0	2000	1200	120%	0	MONTH
↓	↑	Orders	01/01/2010	56500	0	100000	50000	113%	0	MONTH
↑	↓	Disposals	01/01/2010	43	0	500	50	86%	0	MONTH



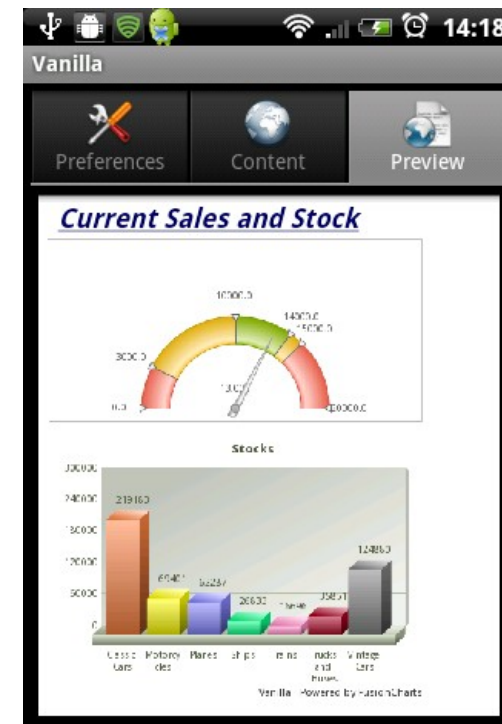
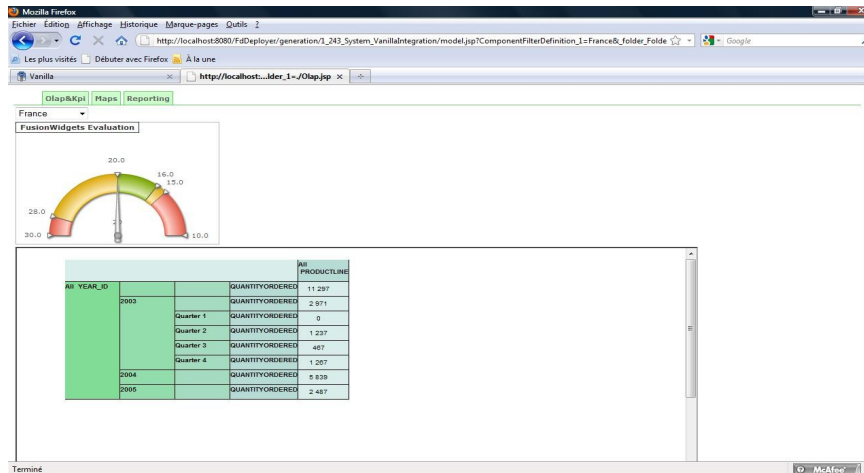
Vanilla Cloud Management

- Load Balancer & Cluster Management using Vanilla Hypervision
- Statistics & Reports for invoicing (per « user » cost)
- Tools to manage Vanilla Platform Performance



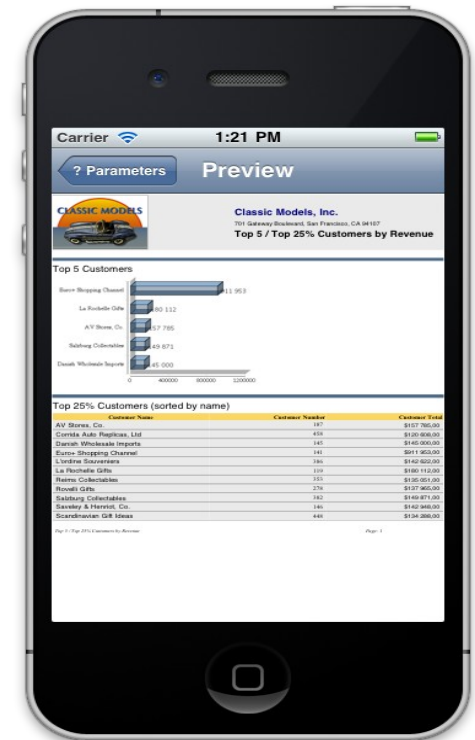
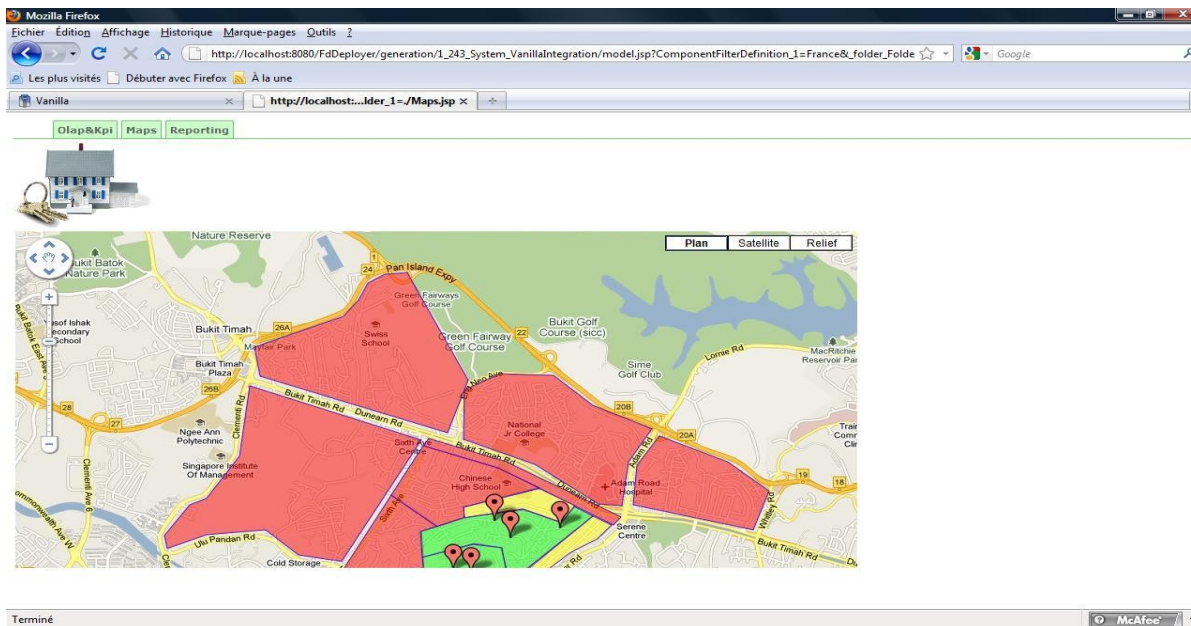
Different usages

- Large database access without infrastructure constraints (be careful with security)
- Data collection for companies with subsidiary or governmental institution
- Real Time information delivery : alert mechanism, telecom & network traffic
- Global public statistics & partner relation



Cost & Benefit

- Minimum cost for Infrastructure (Vanilla Server & Development)
- Ease of development & deployment (can be send by mail !)
- Maximum availability : Amazon & Google Infrastructure



Vanilla Platform

Platform and Web portal for consultation of BI objects

Modules for creation, edition and configuration for system administrators, BI developers, BI architects and integrators.

Vanilla uses Open Source standards : Java (language), XML (communication and objects), Web 2 (GWT), Bonita (workflow), Quartz (planification), Axis (communication) or Lucene (indexation).

First version released in June 2008 and today, version 3.4 released April 2011.

Version	Date	Spécificités
1.2	Juin 2008	EnterpriseServices (Administration), FreeAnalysis (OLAP Rcp et Explorateur Web), FreeMetadata et FreeMetrics
1.3	Janvier 2009	Intégration de Birt et des exports Excels et FreeMetrics pour les collectivités
1.5	Juin 2009	Passage des applications Web en GWT, BiProfiler (Analyses des sources de données), BiLauncher (Programmation de tâches) et Maps Designer (Cartes Google)
2.0	Septembre 2009	Dwh Designer (Design de DataWareHouse), Migration en GWT 1.6, FreeDashboard V2 (Interface de design des tableaux de bord) et BiGateway (Module ETL)
2.2	Février 2010	BiWorkflow (Workflow en BPMN2.0), FreeWebReport (Interface de design Web de rapports) et FmLoader (Interface Web de chargement de métriques)
3.0	Septembre 2010	Vanilla Apps (Disco -Mode disconnecté-, HyperVision -Administration d'un parc de serveurs-), Performance Dashboard (Tableaux de bord multi-onglets), GED (Gestion Electronique de documents) et Refonte de l'architecture
3.4	Avril 2011	Cartes Flash (OLAP, Tableaux de bord et Rapports), Géolocalisation, Vanilla Mobile : iPhone et Android applications, Configuration serveur facilitée et poids réduit, Vanilla Viewer (module dédié consultation de rapports), Vanilla Forms (gestion de formulaires) - Versions disponibles : Windows, Unix (dont MAC)

10 Key points

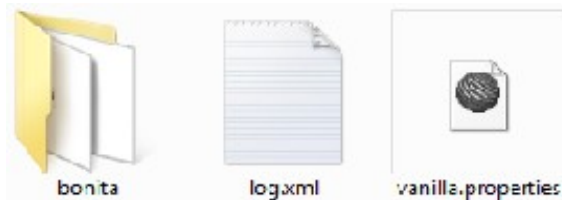
- 'Community' and 'Enterprise' versions with same code and same functions
- Secured metadata integrated with Birt (reports) and FreeDashboard (dashboards)
- KPI suite (performance indicators) integrated (RCP modules and Web applications)
- Administration modules for servers management (configuration, deployment, impact analysis, document manager or tasks planification)
- RCP modules for creation, publication and edition of BI objects (no XML manipulation)
- Web portal for BI objects consultation and additional functions (document manager, historic, preferences) and Web applications access
- ETL module integrated and with direct access to the other objects
- Maps elements and flash format support
- Android and Iphone applications
- Platform supported by the development team

News 3.4

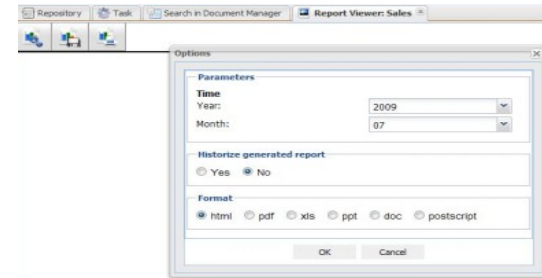
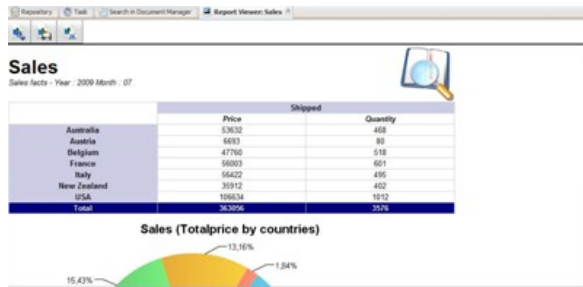
- Flash maps and charts : Reports, Cubes and Dashboard



- Configuration and weight of the server



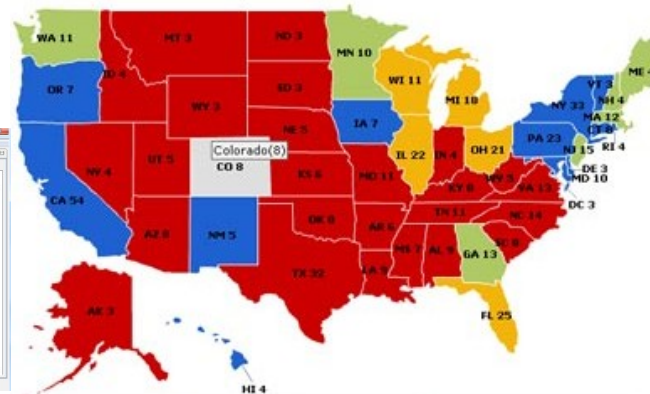
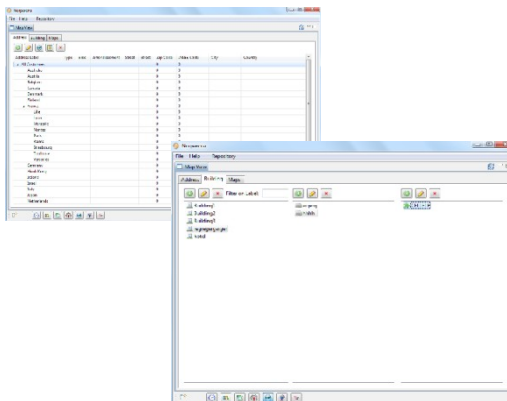
- Vanilla Viewer : reports consultation



- Vanilla Apps : Android and Iphone



- Norparena : Forms, Documents manager, Geolocation and maps



Documentation/Tutorial

- Documentation

32 documentation available

Installation and Configuration

Servers and Web Applications

Modules

English and French



- Tutorial/Movies

Tutorials and movies available
(dailymotion)



- Forums and Community

Forums, FAQ and Help



Documentations and tutorials available on our Web sites:

www.bpm-conseil.com and *forge.bpm-conseil.com*

The screenshot displays the BPM-Conseil website interface. At the top, there is a navigation menu with links for Home, Community, Products, Service & Support, References, Partners, Downloads, and About Us. Below the navigation is a large banner for "Vanilla OpenSource Business Intelligence" featuring a purple arrow and a screenshot of a dashboard. To the left, there is a "News" section with a sub-heading "Vanilla for Android" and a small image of an Android app. Below the news is a "News" section with the text "Manila & Lyon, November 22th, 2010 Touch Solutions and BPM-Conseil Partnership". In the center, there is a "News" section with the text "Vanilla Server, Vanilla for Java, Vanilla for Android, Vanilla for iOS". To the right, there is a "Community" section with a sub-heading "Video Documentation and Howto's" and a list of links for various topics including General, Gateway, BI Process Manager, BI Process Manager Overview, BIPT, Workflow, Enterprise Services, and FreeAnalysis Schema Designer.

Thanks for your attention